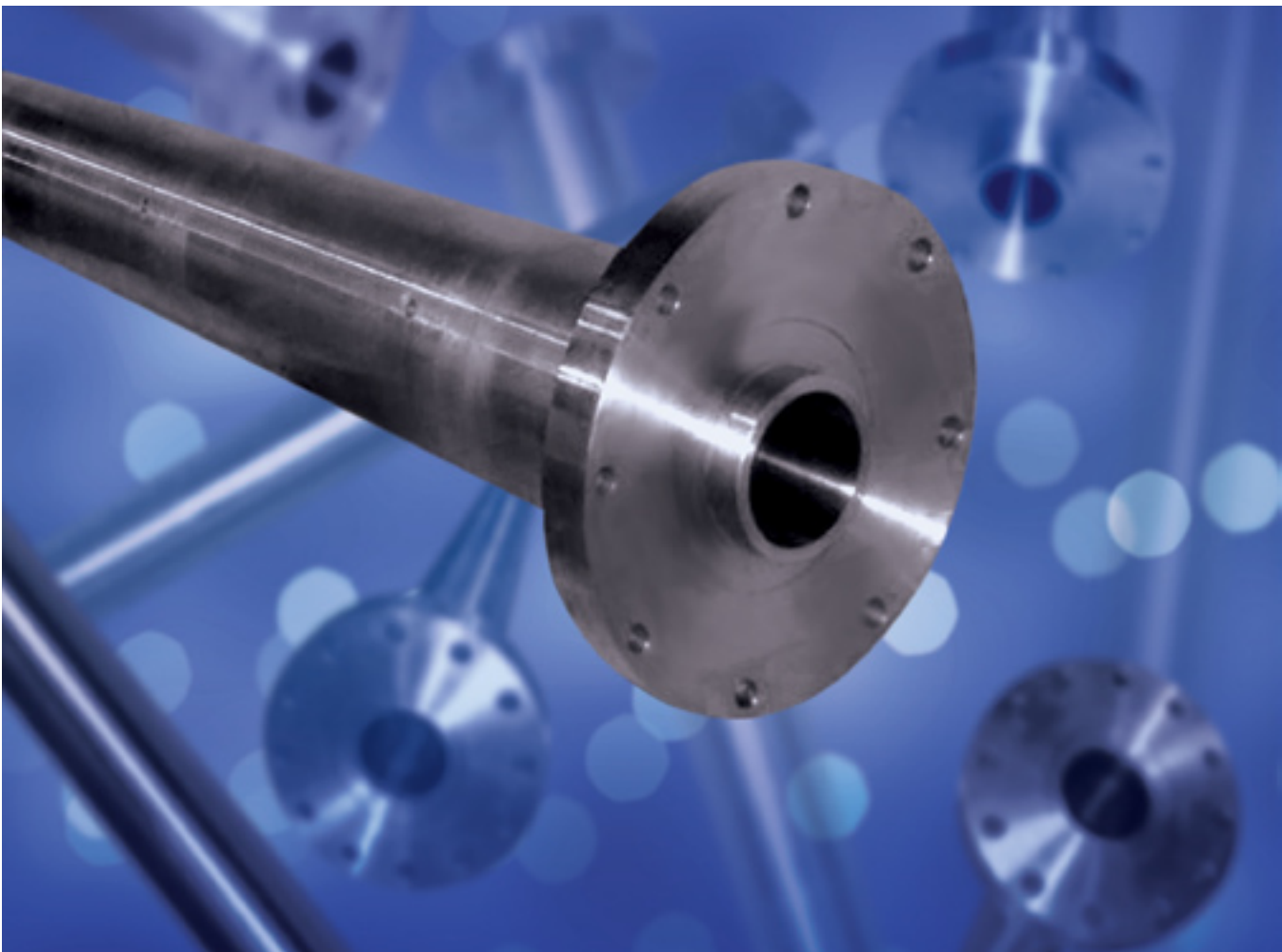


BIMETALLIC BARREL LINING PRODUCTS

Davis-Standard, LLC offers a complete range of bimetallic barrel products to support all extrusion applications including those with highly abrasive and corrosive properties. All products are based on extensive testing and customer feedback, and have evolved over the years to support marketplace demands.

These products are manufactured by D-S Brookes Limited, Davis-Standard's Extrusion Systems European subsidiary, which offers nearly 50 years of expertise in barrel production.



At A Glance

- Four main products are available based on barrel utilization: DS 1000, DS 2000, DS 6000, and DS 8000.
- Bimetallic barrels come in sizes ranging from 19mm to 550mm inside diameter and in lengths up to 8 meters.
- D-S Brookes has been specializing in bimetallic barrels since 1960.

BIMETALLIC BARREL LINING PRODUCTS cont.



Each individual barrel is engineered to give customers the most value for their investment. These products are compatible with the majority of screw finishes including Nitriding, Chrome, Colmonoy 56 & 83, Stellite 6 & 12, and Flame Hardened 4140 to name a few.

DS 1000

Iron-based barrel lining for general purpose wear environments that is fitted on nearly all Davis-Standard machines as a standard item.

DS 2000

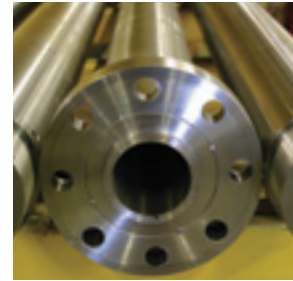
This lining features a multifunctional bimetallic alloy that provides the user with high wear resistance accompanied by medium corrosion resistance and the capability to handle up to 30 percent glass and filler.

DS 6000

Designed for use in corrosive wear environments, this nickel-based product is best when processing compounds such as those with flame retardants, fluoropolymers, and high-temperature resins.

DS 8000

A nickel-based alloy, this product is engineered with a high percentage of tungsten carbide particles suspended within its matrix. Designed for corrosion and wear resistance, this lining is recommended for those applications requiring highly filled/reinforced compounds and/or extreme corrosion.



D-S BROOKES BIMETALLIC BARREL LINING DESIGN PARAMETERS

Model	DS 1000	DS 2000	DS 6000	DS 8000
Alloy Type	Fe, Ni, Cr, B, C	Fe, Ni, Cr, Mo, Si, B, C	Ni, Co	Cr, Co, C, W
Hardness	58-64 RC	60-64 RC	48-54 RC	58-64 RC
Straightness	1-20000	1-20000	1-20000	1-20000
Backing Material	4140 HR	4140 HR	4140 HR	4140 HR
Utilization	Wear Resistance (Most Common)	Wear Resistance & Medium Corrosion	Corrosion	Premium Wear & Corrosion

DAVIS-STANDARD, LLC
#1 Extrusion Drive
Pawcatuck, CT 06379-2313 | UNITED STATES
Tel: +860-599-1010 | Fax: +860-599-6258

D-S BROOKES LIMITED
Unit 33 Hainge Road
Tivdale, Oldbury, West Midlands B69 2NY | UNITED KINGDOM
Tel: +44 121 522 0030 | Fax: +44 121 522 0031

DAVIS-STANDARD ASIA-PACIFIC
Room 1007, Jing An China Tower | 1701 Beijing (W) Road
Shanghai 200042 | P.R. CHINA
Tel: +86-21-5150 1908 | Fax: +86-21-5150 1906